

Table Of Contents

SUBDOMAINS OVERVIEW	1
Overview	1
OPTIONS.....	2
Menu Bar.....	2
File Close	2
View Always on Top	2
MANAGING SUBDOMAINS	3
Managing Subdomains.....	3

Subdomains Overview

Overview

Subdomains are useful for segmenting a large primary domain into smaller units without setting up multiple independent NexTalk servers. For example, a company that occupies several buildings may want to create a subdomain for each building. Subdomains are “hosted” by the primary domain. The administrative modules available in a subdomain are limited; subdomain users cannot configure properties of the NexTalk system as a whole, only of the subdomain to which they belong. For example, the Telephony Services module is not available to subdomain administrators but the Users/Groups module is. On the flip side of the coin, administrative changes made in the primary domain will apply to all hosted subdomains.

Options

Menu Bar

File | Close

This option closes the Subdomains module.

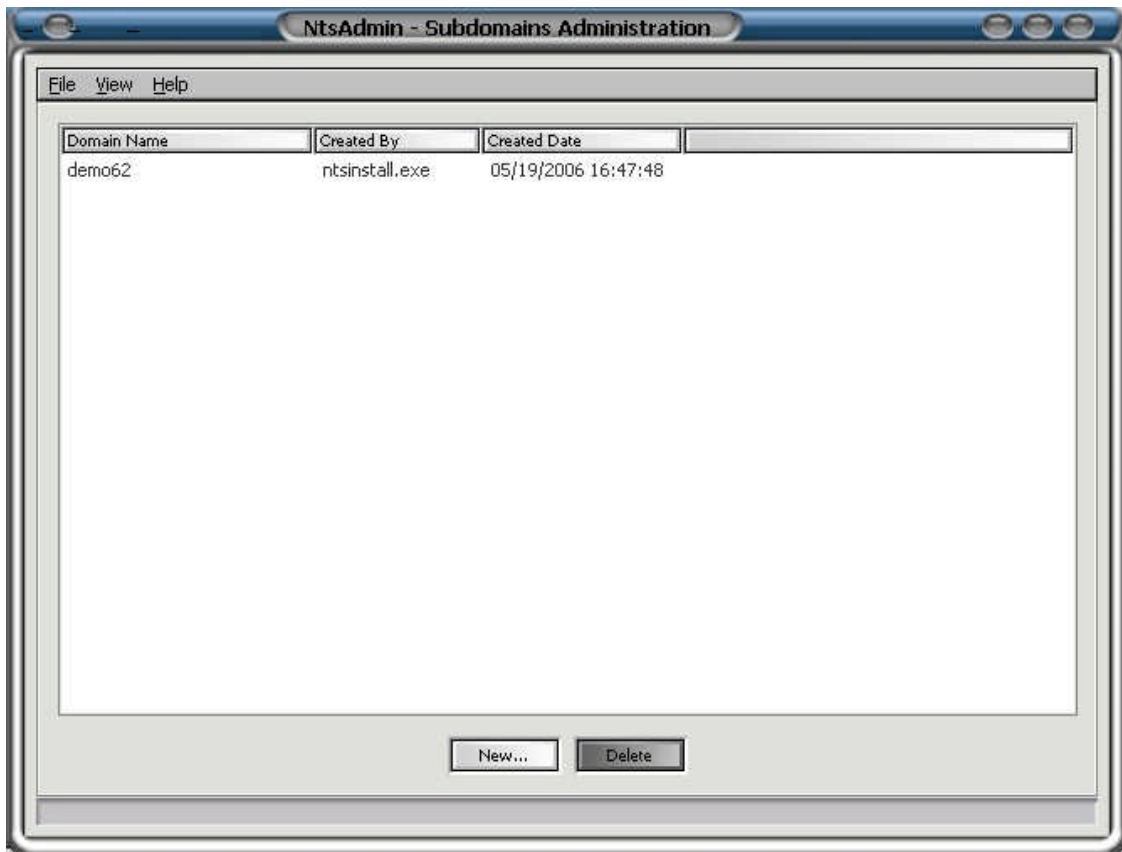
View | Always on Top

This option keeps the Subdomains window in front of all other open windows.

Managing Subdomains

Managing Subdomains

To add a new subdomain, or to view or edit existing subdomains, open the Subdomains module from the Admin menu. Only users with administrative privileges can manage subdomains.



Once a subdomain has been created, you can add users and groups by logging in to the subdomain with the NtsAdmin account. See the Users and Groups manual for more information about managing User/Group accounts. Users created in the subdomain will have access only to the subdomain. Users created in the primary domain can login to any existing subdomain. Once a user from the primary domain logs in to a subdomain, their user account information is automatically added and saved.