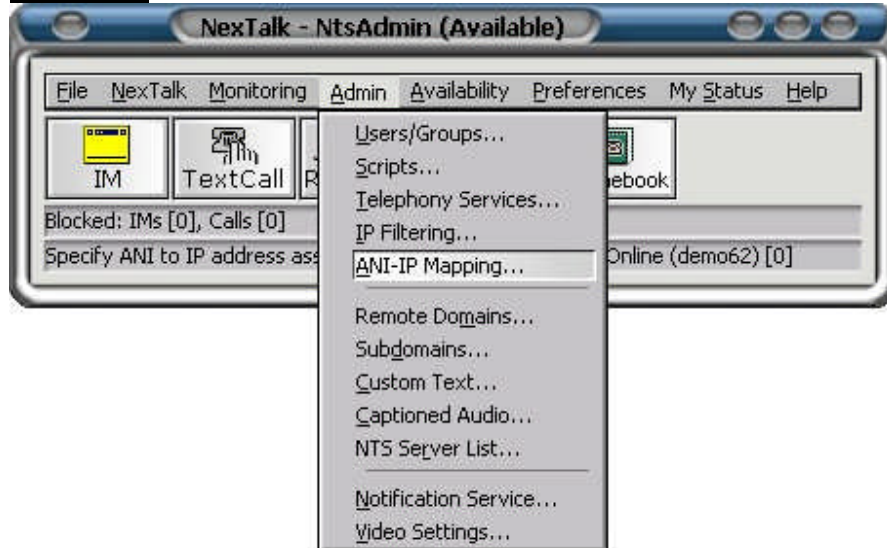


Table Of Contents

ANI-IP Mapping Overview.....	1
Overview	1
Options	3
Menu Bar.....	3
File Close	3
View Always on Top	3
Using ANI-IP Mapping	4
Configure the ANI-IP Table	4
Remote IP Addresses	5
Fixed vs DHCP Dynamic IP Addressing.....	6

ANI-IP Mapping Overview

Overview



The ANI-IP Mapping module manages the ANI-IP Associations table which links or associates a computer IP address to a phone number. In the *NTS* system, phone calls onto the *PSTN* occur at an NTS Telephony Server (TS). When a call is made through NTS, it may go out from a TS close to, or far away from, the NTS user making the call. Earlier versions of NTS would simply use the phone number of the TS as the ANI of the call. To illustrate, suppose NTS user Joe calls his friend Bob's TTY. On older versions of NTS Bob would see the phone number of the TS instead of Joe's. This is a significant problem for calls to 911. The 911 emergency system depends on having the true ANI of a caller. This phone number can be used to locate a caller and send emergency service personnel to this location.

Using the ANI-IP Associations Table this issue can be solved. When an NTS client makes an outgoing telephone call, the NTS system looks at the IP address of the NTS client. NTS then consults the ANI-IP Associations table, and if a match is found, NTS will write the phone number found in this table as the ANI of the outgoing call. Joe's friend Bob, in the example above, will see Joe's true phone number on his Caller-ID device. If Joe calls 911, the 911 operator can also see Joe's true phone number.

The ANI-IP mappings feature is particularly important for NTS hosted services. When NXi, or a licensed partner, hosts NTS services for an organization, an ANI-IP entry is made so that TTY calls originating from this organization will show a correct Caller-ID.

ANI IP Mapping

Note: NTS can only do ANI mapping with the proper telephony equipment and phone lines. ANI information is only received on ISDN T1 trunks, not analog phone lines.

Options

Menu Bar

File | Close

This option closes the ANI-IP Mapping module.

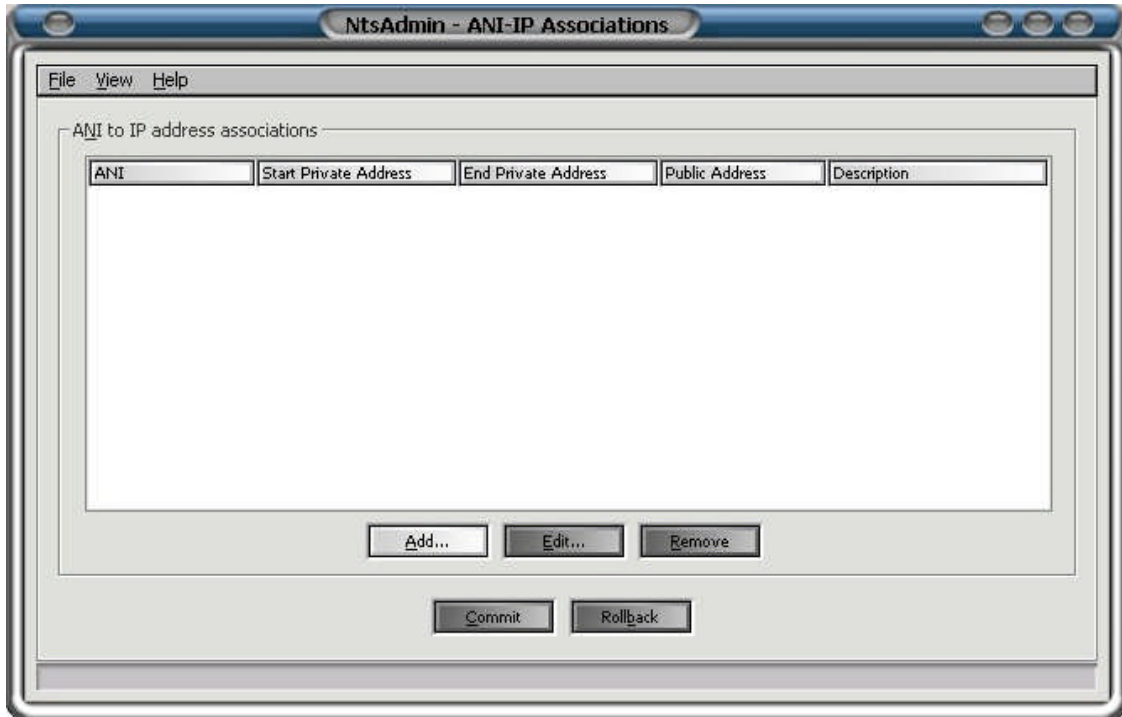
View | Always on Top

This option keeps the ANI-IP Mapping window in front of all other open windows.

Using ANI-IP Mapping

Configure the ANI-IP Table

Open the ANI-IP Associations table by selecting "ANI-IP Mapping" from the Admin menu on the main NexTalk menu bar.



Choose the Add button to bring up the ANI-IP Address Associations setup form.

The screenshot shows a dialog box titled "Add ANI IP A...". It has a standard Mac OS window title bar with three buttons (red, yellow, green). The dialog is divided into several sections:

- ANI:** A text input field with a vertical cursor.
- Local IP address or range:** A section containing two radio buttons. The "Exact" radio button is selected. Below it is an "IP address:" field with the value "0 . 0 . 0 . 0". Below that is the "Range" radio button, which is unselected. Under "Range" are two fields: "Start IP address:" and "End IP address:", both containing "0 . 0 . 0 . 0".
- Remote IP address:** A section with an unselected radio button and an "IP address:" field containing "0 . 0 . 0 . 0".
- Description:** A large empty text area.
- Buttons:** "OK" and "Cancel" buttons at the bottom.

Type a phone number in the ANI space, then associate it with either a specific IP address or a range of IP addresses. You may also choose to associate the phone number with a [remote IP address](#). Optionally, you can enter basic information about the phone number in the Description box. When you are finished, choose the OK button to save your settings or the Cancel button to exit without saving.

Add as many IP Addresses and phone numbers as needed, then choose the Commit button to save them to the NTS database. If you want to start over, choose the Rollback button. You can also come back later and edit or remove ANI-IP associations with the Edit button and Remove button.

Remote IP Addresses

When adding or editing an ANI-IP association, a local IP address or range is required. The local IP address is the address seen by the NexTalk Client software. Optionally, in addition to the local IP address(es), you can associate an ANI with a remote IP Address. The remote IP address is the address seen by the NTS server.

ANI IP Mapping

The screenshot shows a dialog box titled "Add ANI IP A...". It has a standard Windows-style title bar with three buttons on the right. The dialog is divided into several sections:

- ANI:** A text input field with a vertical cursor.
- Local IP address or range:** A section containing two radio buttons. The "Exact" radio button is selected. Below it is an "IP address:" field with the value "0 . 0 . 0 . 0". Below that is the "Range" radio button, which is unselected. Under "Range" are two fields: "Start IP address:" and "End IP address:", both containing "0 . 0 . 0 . 0".
- Remote IP address:** A section with an unselected radio button and an "IP address:" field containing "0 . 0 . 0 . 0".
- Description:** A large empty text area.
- Buttons:** "OK" and "Cancel" buttons at the bottom.

In some environments when an NTS client logs in, the remote IP address will match the local IP address; however, in other environments they will differ. For example, suppose a user logs in from computer with a “10 dot” or “192 dot” local IP address such as 10.0.0.5 or 192.168.1.10. These addresses are local, not Internet IP addresses. If such a client logged in across the Internet, or across a **WAN**, the NTS server does not see the local IP addresses but instead an Internet IP address. NTS records both the local IP address and the remote IP address.

A given ANI-IP association will always include the local IP address. If this is the only IP address involved, then do not check the optional “Remote IP Address” check box. If the remote IP address differs, then enter it here.

Fixed vs DHCP Dynamic IP Addressing

The ANI-IP Associations table accepts either a single local IP address or a range of local IP addresses. Suppose an organization using NTS occupies several buildings and uses **DHCP** addressing. Every time a user logs into the NTS server and connects to the network, the computer is assigned a different IP address. Ideally, the IP addresses used in each building will occupy a unique range. The ANI-IP table can then be set to assign a main building phone number

Using ANI-IP Mapping

to this entire range. In this way, 911 will at least send a fire truck or other vehicle to the correct building.

The same organization can also assign unique IP addresses (fixed IP addressing) and individually associate these to unique phone numbers. NTS will use the most specific ANI-IP match first, and then progress to less specific IP address ranges in its number assignments.