

## SIP Telephony Install Guide

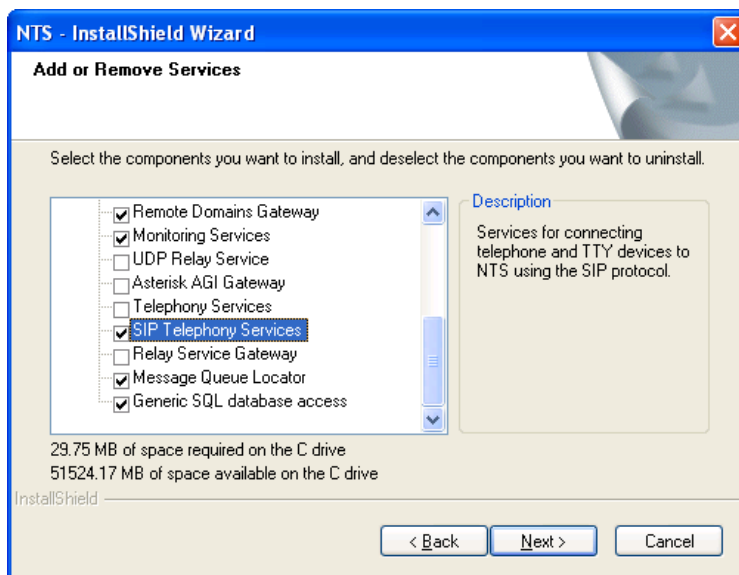
### 8-8-07

1. Install the dongle drivers.
2. Plug the dongle into the USB port.
3. Run PikaSipInstall.exe to install the SIP drivers.  
A Reboot is required after this step.
4. Port License file

Pika's SIP ports are licensed. The license is tied to an Ethernet port. NXi provides a USB Ethernet port and a license file named license.keys.. The license file must be copied to "c:\Program Files\PIKA\AoH\conf" **before** NTS is installed. If the SIP telephony server is already running, it must be stopped and re-started after the license file is copied.

5. Run "Install NTS Server Components".

You might have to refer to the "Installation Quick Start Guide" depending whether this is a stand alone SIP Telephony Server or if this is suppose to run in conjunction with other NTS services. If your SIP telephony server is running with other services,



During SIP telephony server installation, the Telephony Server Setup window prompts for configuration information. The information is saved in two SIP configuration files, pika\_gp.cfg and pika\_aoh.cfg. These files are read when the telephony server starts. They are found in “c:\Program Files\PIKA\Grandprix\conf”.

NTS - InstallShield Wizard

**Telephony Server Setup**  
SIP Port Setup.

Pika SIP telephony server settings:

SIP User Name:

Authorization Password:

SIP Switch IP Address:

SIP Switch Port:

Number of Ports:

UDP Port Range:  to

InstallShield

< Back   Next >   Cancel

SIP User Name	Each telephony server is assigned a user name. It is an alphanumeric string. It forms the user part of the telephony server’s SIP address. It is used when registering with the SIP registrar and when calling.
Authorization Password	The SIP registrar validates this password during registration.
SIP Switch IP Address	This is the IP address of the proxy server (SIP registrar). eg Asterisk or Cisco
SIP Switch Port	This is the port number of the proxy server (SIP registrar) (usually 5060).
Number of Ports	This is the number of Pika licenses authorized in Pika’s license file, license.keys.
UDP Port Range	The range specifies the UDP ports used for the SIP media path. Two UDP ports are required for each SIP port.

#### 4. Run SIP Telephony Server

Start the SIP Telephony Server from the NTS Process Administrator. During start up, the telephony server registers with a SIP registrar. Successful registration with the SIP registrar is required before the SIP telephony server can make outgoing calls and receive incoming calls.